

The MSHC Newsletter

Published by the Maywood Station Historical Committee for its Members and Friends

Santa Visited the Maywood Station Museum on Saturday, December 13, 2014

Santa made a special visit to the Maywood Station Museum for the **13th Annual Santa at Maywood Station** event on December 13, 2014. A festive crowd of young ones waited for the jolly red elf's arrival and the opportunity to visit with him. Santa met with each good little boy and girl and every child received a bag of treats courtesy of *Myron Corporation; Operation Lifesaver; TD Bank; Children Are Creative; Atlas Model Railroad Company; the New York, Susquehanna & Western Railway; and the Maywood Station Museum*. Each child attending also was given a free chance to win special raffle prizes including a BMW Junior Bike Tricycle courtesy of *Park Ave BMW*, which was won by Wes Crawford and an HO-Scale Train Set courtesy of *Atlas Model Railroad Co.*, which was won by Alexandria Vega.

The Maywood Station Museum thanks Tom Richards for his "special" help and thanks to Bob and Donna Funk of *Moon Doggie Coffee Roasters & Café* who provided refreshments during the event. The MSHC once again look forward to hosting next year's **Annual Santa at the Maywood Station Museum** event!



event. (All photos by Ed Kaminski)



Another wedding photo shoot was recently arranged at the Maywood Station Museum on September 21, 2014. Sean and Leah O'Connell strike a pose with their wedding party aboard Caboose #24542. (Photo by Ed Kaminski)

The 2015 New York, Susquehanna & Western Calendar is Available Now!

The 2015 large format, all-color, New York, Susquehanna & Western Railway calendar is available from the Maywood Station Museum. The calendar contains colorful past and present images of the New York, Susquehanna & Western Railway. The opened calendar measures 12 wide X 18" high and each of the fourteen images (one for each month and the front and back covers) measures 9" high X 12" wide. Two additional images are contained inside the front cover. Calendars are available for \$11.00 each while supplies last at Maywood Station on Museum Open House dates or by mail order on our website. We also accept checks or money orders for calendars at \$14.00 each (includes 1st class postage and handling) made out to "Maywood Station Museum", 108 Stelling Avenue, Maywood, NJ 07607.



The 2015 New York, Susquehanna & Western Railroad Calendar

The Maywood Station Museum 2014 Holiday Ornament is Available Now!

A beautiful, gold beveled crystal, silver-polished, **13th Annual 2014 Maywood Station Museum Holiday Ornament** is available now for \$6.00 each at Museum Open House's, by mail order on the Maywood Station Museum website, and through the holidays at **Nikki's Card and Gift Shoppe**, 58 West Pleasant Ave., Maywood, NJ and **Moon Doggie Coffee Roasters**, 108 West Pleasant Ave., Maywood, NJ.



The Maywood Station Museum 2014 Holiday Ornament

H.O. Scale Model of Maywood Station Museum's Historic Locomotive is Available Now!

A finely-detailed, operating, H.O. Scale limited-run model of the actual National Register Listed, 1942-built, New York, Susquehanna & Western Alco S-2 Locomotive #206 that is cosmetically restored and located at the Maywood Station Museum has been produced by the Atlas Model Railroad Company. The model is available **EXCLUSIVELY** through the Maywood Station Museum while supplies last and all proceeds will benefit the museum.

The Maywood Station Museum is accepting orders while supplies last. The model is available in Item # MSHC-01 (Analog/Decoder Ready) for \$125.00 each (MSRP \$149.95) and Item# MSHC-02 (Decoder Equipped with Sound) for \$220.00 each (MSRP \$259.95). To place an order for a model(s), please send an e-mail to info@maywoodstation.com with the quantity you wish to order and specify either Item# MSHC-01 or Item# MSHC-02 including your name, address and telephone number.

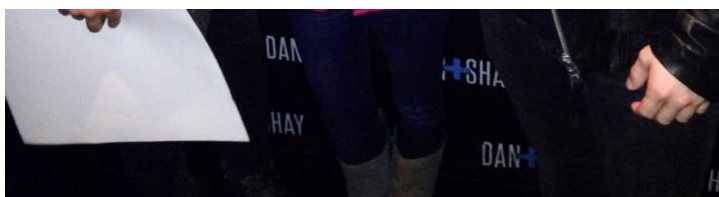
For more information, please visit the Maywood Station Museum website at www.maywoodstation.com or the Maywood Station Museum Facebook page. All proceeds go to further preservation and maintenance of the historic Maywood Station Museum.



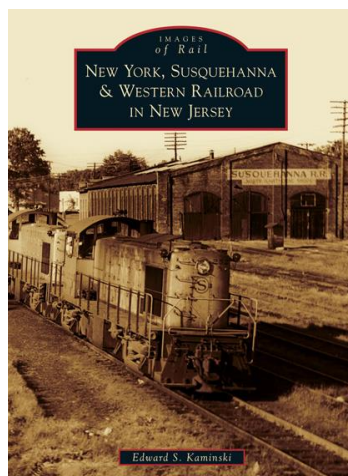
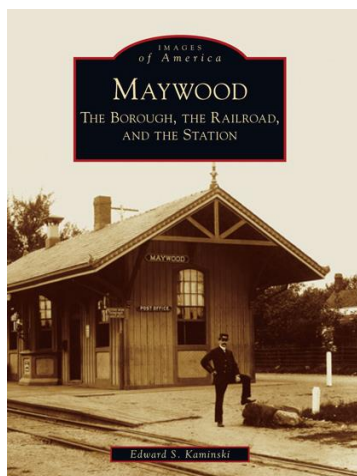
*An H.O. Scale model of New York, Susquehanna & Western Railroad Alco S-2 Locomotive #206 has been exquisitely produced by the Atlas Model Railroad Company for the Maywood Station Museum. The model is available exclusively from the Maywood Station Museum and ordering details can be found elsewhere in this issue. Shown **left** are two views of the model, which is an exact 1/87th scale replica of the exact locomotive restored and located at the Maywood Station Museum. (Both photos by Robert. P. Pisani)*



Kayleigh Kaminski got to meet Dan+Shay backstage at a meet and greet before their concert at the Highline Ballroom in New York City on 10/23/2014. (Photo by Rosemarie Kaminski)



Borough, The Railroad, and The Station traces Maywood's history from a farming community through its population and industrial growth brought on in part by the coming of the New Jersey Midland Railway in 1872. Separate chapters include The Borough of Maywood; The New York, Susquehanna & Western Railroad in Maywood; and Maywood Station including its role in the development of Maywood and its recent restoration and museum. **New York, Susquehanna & Western Railroad in New Jersey**, traces the history of the railroad from the late 19th century through the 20th century and covers the complete route of all its mainline track and branches in New Jersey. Each 128-page book contains over 200 quality images with detailed captions and are available for \$22.00 each at Maywood Station on Museum Open House dates or by mail order through our website at www.maywoodstation.com. All proceeds will go toward further preservation and maintenance of the historic Maywood Station Museum.



AVAILABLE EXCLUSIVELY FROM THE MAYWOOD STATION MUSEUM!

ATLAS HO S2 LOCOMOTIVE SUSQUEHANNA #206

For more details on the model, please see: <http://www.atlasrr.com/HOLoco/hos2.htm>

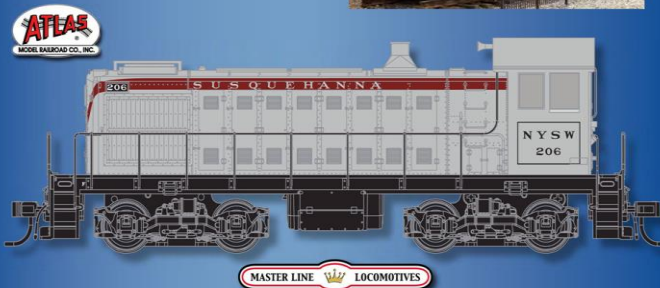
SUSQUEHANNA 206 PRICING

ITEM#	DESCRIPTION	PRICING	Expected Delivery 4th Quarter 2013 Mail order customers please add \$14 shipping & handling.
ITEM# MSHC-01	HO DC/ANALOG (DCC READY)	\$125	
ITEM# MSHC-02	HO DCC/LOKSOUND SOUND DECODER-EQUIPPED	\$220	

NOW TAKING PRE-ORDERS!

EXTREMELY LIMITED
QUANTITIES AVAILABLE!

Please send an e-mail to info@maywoodstation.com to reserve yours today. Be sure to include your full name, e-mail address, phone number and item number with your pre-order request.



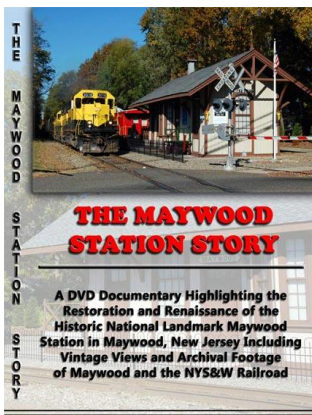
The Maywood Station Museum is now on Facebook - please visit and "LIKE" our page! Also "follow" the Maywood Station Museum on Twitter!



The New York, Susquehanna & Western Technical & Historical Society offers seasonal train rides and excursions operated out of Phillipsburg, New Jersey along the scenic Delaware River. Popular train rides and excursions include **The Polar Express; A Day Out With Thomas; The Easter Bunny Train; The Mine Train; The Pumpkin Train; The Wine Train; The Dinosaur Train;** and others. Please visit the New York, Susquehanna & Western Technical & Historical Society website at www.nyswths.org for a full schedule of train rides, excursions, events, ticket ordering, attractions and additional information. (Photo by Ed Kaminski)

Maywood Station Museum Store

The Maywood Station Museum has available numerous merchandise items in the Museum Store on Open House dates or they can be ordered online on our website at www.maywoodstation.com. These items include the award-winning DVD documentary *The Maywood Station Story; Maywood – The Borough, The Railroad, and The Station* and *New York, Susquehanna & Western Railroad in New Jersey* books; Atlas Model Railroad Company HO and N-scale models of the actual Maywood Station™; Maywood Station Museum Holiday Ornaments and Pens; Maywood Station Museum T-shirts, Polo Shirts, Windshirts and Caps; NYS&W Railway Caps; NYS&W Railway Miniature Clocks; NYS&W Railway Calendars; NYS&W Railway Lithographs and Postcards; NYS&WT&HS Calendars; Engineer Hats; Children's Train Whistles; Children's Pull Toy Trains; and Atlas Model Railroad Company Train Sets. All proceeds help support the preservation and maintenance of the historic Maywood Station Museum.



Among the items available in the Maywood Station Museum Store are the award-winning DVD Documentary, *The Maywood Station Story*, and HO and N-scale models of the actual Maywood Station™.

Membership in the MSHC

The Maywood Station Historical Committee is an all-volunteer, 501C3 non-profit, educational and historical society dedicated to the preservation, education and maintenance of the 1872-built New York, Susquehanna & Western railroad station in Maywood, NJ. The station is listed on the National, State of New Jersey and Bergen County Registers of Historical Places and is listed as a State of New Jersey Historic Archive. Membership in our organization includes participation in our meetings and work sessions; periodic e-mail updates on station news and events; discounts on MSHC merchandise; and our quarterly newsletter. It is a requirement that all MSHC members must join our parent organization, the New York, Susquehanna & Western Technical & Historical Society. Dues are \$25 for individuals per calendar year and include *The Reflector* Magazine and the annual all-color calendar as well as help support the restoration, preservation and maintenance of all NYS&WT&HS/MSHC sites, equipment and operations. Membership applications are available at Maywood Station on Museum Open House dates or online at <http://www.nyswths.org/>.

THE MSHC NEWSLETTER is published quarterly by the Maywood Station Historical Committee, a Division of the 501C3, non-profit, New York, Susquehanna & Western Technical & Historical Society, Inc., 108 Stelling Ave., Maywood, NJ 07607

For more information on the Maywood Station Historical Committee, please visit us on the web at: <http://www.maywoodstation.com/>, on our Facebook page or e-mail us at: info@maywoodstation.com .

2015 Maywood Station Museum Open House Schedule

The Maywood Station Museum will be open on the following dates and times in 2015:

The Maywood Station Museum will be closed during the Winter Months of January, February and March. A full listing of 2015 Museum Open House Dates will be announced on our Website and Facebook Page later this Winter.

*Additional events may be added to the above schedule. Please check our website www.maywoodstation.com and our Facebook page for the latest updates.

Winter 2015 MSHC Membership Meeting Schedule

The membership of the MSHC meets twice monthly for work sessions at Maywood Station on Wednesday evenings starting at 7pm. Membership Business Meetings will be held quarterly starting at 7:30pm. Membership will be notified in advance of each meeting date. New members are always welcome.

MSHC Membership News

Doug Earls, Tim Moses and Tom Callan recently donated two concrete railroad milepost markers to the collection and they have been installed by members on the museum grounds.....John Brown vacationed in Providence Town, MA in September.....The Northeast Regional Scout Museum in Rochelle Park, NJ held its grand opening on Sunday, October 2. MSHC member Ed Quinn began work to build this museum in 1999 and serves as its Chairman..... Rob Pisani visited China on business in early October.....Gus Aversa performed in the *Maywood and Music* theatre group's rendition of *Spamalot* at Our Lady Queen of Peace Church in Maywood on November 15.....Work on restoring the original NYS&W semaphore pole has been suspended until the warmer weather next spring. The pole and circuit box have been sanded, primed and received a new coat of paint in advance of winter.....The Maywood Station Museum continues to be a popular location for photo shoots this past fall with several being conducted through permission granted by the museum.....Sales of the H.O. scale model of Maywood Station Museum's NYS&W S-2 #206 continue to be brisk.....The Maywood Station Museum Annual Holiday Party was held at Gencarelli's in Lyndhurst, NJ on December 18.....The MSHC welcomes aboard new members Bob and Donna Funk.....